

LTX Technical Data

Electric Tractor and Transporter

LTX 20

LTX-T 04

LTX 50/Li-Ion

LTX-T 06/Li-Ion





				STILL	STILL	STILL	STILL		
Distinguishing marks	1.1	Manufacturer		LTX 20	LTX-T 04	LTX 50/Li-Ion	LTX-T 06/Li-Ion		
	1.2	Manufacturer's type designation		Electric	Electric	Electric	Electric		
	1.3	Drive		Stand-on	Stand-on	Stand-on	Stand-on		
	1.4	Operation							
	1.5	Load capacity/load	Q	kg	-	400	-	600	
	1.5.1	Towing capacity	Q	kg	2000	1000	5000	5000/2000 ¹	
	1.7	Nominal traction capacity	F	N	400	300	-	-	
	1.9	Wheel base	y	mm	907	1487	1133 ^{2,3}	1453 ²	
	Weights	2.1	Service weight (incl. battery)		kg	620 ³	755 ³	1223	1207
2.3		Axle load without load	drive end/load end	kg	325/295	415/340	607/616	715/492	
Tyres/chassis	3.1	Tyres			Solid rubber/superelastic	Solid rubber/superelastic	Solid rubber/superelastic	Solid rubber/superelastic	
	3.2	Tyre size	drive end	mm	∅ 230 x 75	∅ 230 x 75	∅ 254 x 102	∅ 254 x 102	
	3.3	Tyre size	load end	mm	2 x ∅ 250 x 80	2 x ∅ 250 x 80	∅ 250 x 85	∅ 250 x 85	
	3.4	Additional wheels (dimensions)		mm	2 x ∅ 100 x 40	2 x ∅ 100 x 40	- ³	100 x 40	
	3.5	Number of wheels (x = driven)	drive end/load end			1x2/2	1x2/2 ³	1x2/2	
	3.6	Track width	drive end	b ₁₀	mm	418	418	580	
	3.7	Track width	load end	b ₁₁	mm	484	484	604	
Basic dimensions	4.7	Height to top of overhead guard (cabin)		h ₆	mm	-	-	2245 ^{3,4}	2275 ⁵
	4.8	Stand height/seat height	min./max.	h ₇	mm	754/1044	794/1084	150 ³ //905/1094	180//935/1124
	4.9	Height drawbar/steering wheel in driving position	min./max.	h ₁₄	mm	1178/1278	1218/1318	1270 ^{3,5}	1300 ⁵
	4.12	Coupling height		h ₁₀	mm	167	173	190/245/300/355/410	220
	4.13	Loading height		h ₁₁	mm	-	271	-	430
	4.17	Overhang length		l ₅	mm	243	531	195	422
	4.19	Overall length		l ₁	mm	1305	2172	1512 ²	2059 ²
	4.21	Overall width		b ₁ /b ₂	mm	600	600/636	800	800
	4.32	Ground clearance, centre of wheel base		m ₂	mm	40	80	70 ³	100
	4.35	Turning radius		W _a	mm	1080	1660	1327 ^{2,3}	1640 ²
Performance data	5.1	Driving speed	laden/unladen	km/h	8/8	8/8	8/14	10/10	
	5.1.1	Driving speed, backwards	laden/unladen	km/h	3/3	3/3	6/6	6/6	
	5.5	Traction S2 = 60 min	laden/unladen	N	400	400	See diagram	See diagram	
	5.6	Maximum traction S2 = 5 min	laden/unladen	N	2000	2000	See diagram	See diagram	
	5.8	Maximum gradeability	laden/unladen	%	5/10	5/10	See diagram	See diagram	
	5.9	Acceleration time	laden/unladen	s	4/4	4/4	7.1/5.0	5.2 - 5.9 - 6.6 ¹ /4.8	
Electric engine	5.10	Service brake			Electromagnetic	Electromagnetic	Electromagnetic	Electromagnetic	
	6.1	Driving motor, power S2 = 60 min		kW	1.5	1.5	3	3	
	6.3	Battery according to DIN 43531/35/36; A, B, C, no			No	No	No	No	
	6.4	Battery voltage/nominal capacity K _s		V/Ah	24/200	24/200	24/345-465	24/345-465	
	6.5	Battery weight ±5%		kg	185	185	402	402	
	6.6	Energy consumption according to VDI cycle		kWh/h	1.21	1.35	4.3	3.22	
	6.7	Turnover output		t/h	-	-	370	410	
	6.8	Energy consumption at maximum handling capacity		kWh/h	-	-	1.8	2.35	
Misc.	8.1	Type of driving control			AC control	AC control	AC control	AC control	
	10.7	Sound pressure level (driver's ear)		dB(A)	75	75	<70	<70	

¹ In combined application

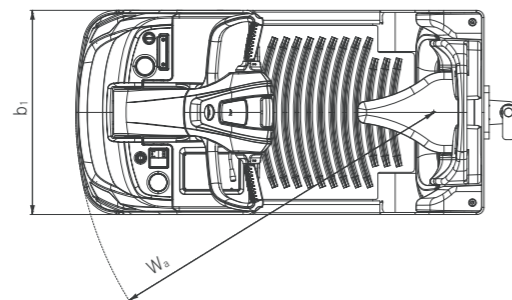
² With tray 54 or Li-Ion +114 mm

³ With ground clearance m₂ = 100 mm: two additional wheels b₁₀ = 580 mm, y = 1150 mm (with tray 54 or Li-Ion +114 mm), h₇ = 180 mm, h₁₄ = 1300 mm,

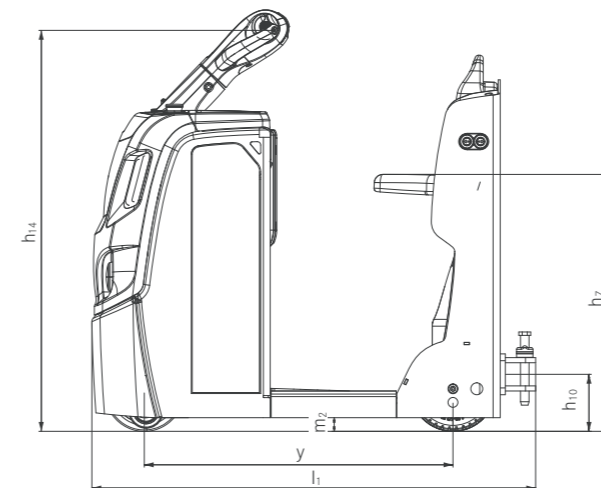
W_a = 1344 mm (with tray 54 or Li-Ion +114 mm)

⁴ ±10%

⁵ Optional equipment

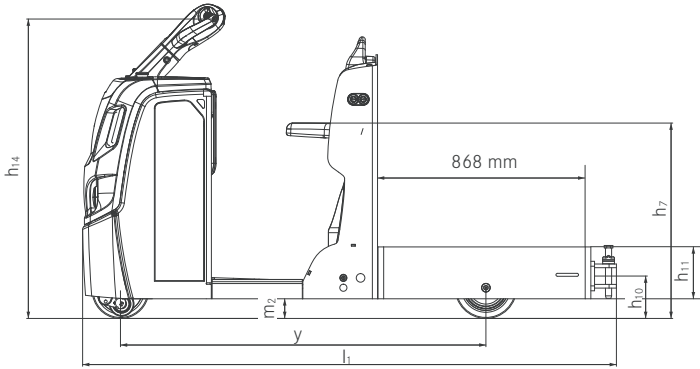


Top view LTX 20

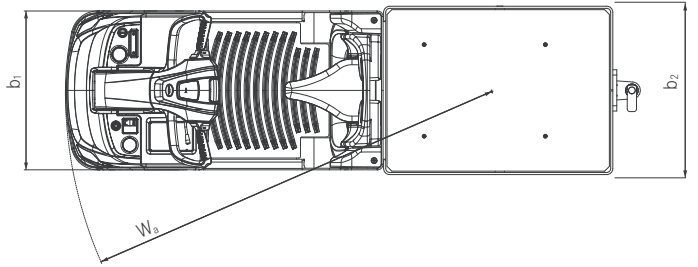


Side view LTX 20

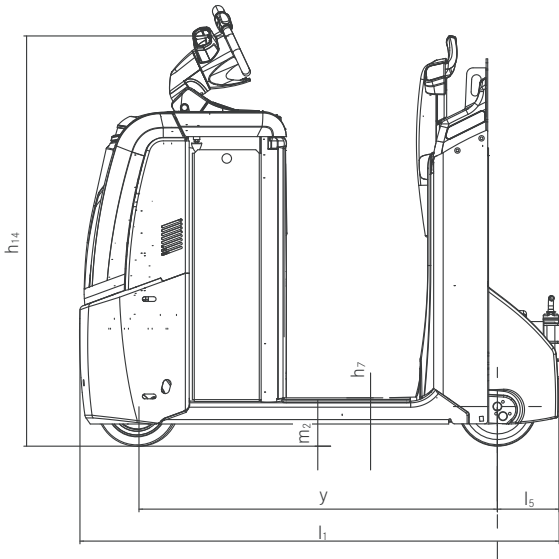
LTX Electric Tractor and Transporter
 Technical Drawings



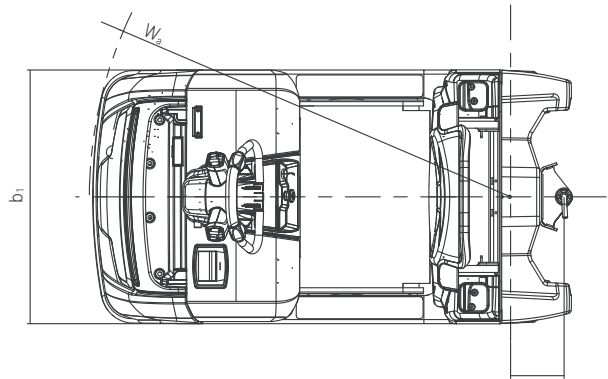
Side view LTX-T 04



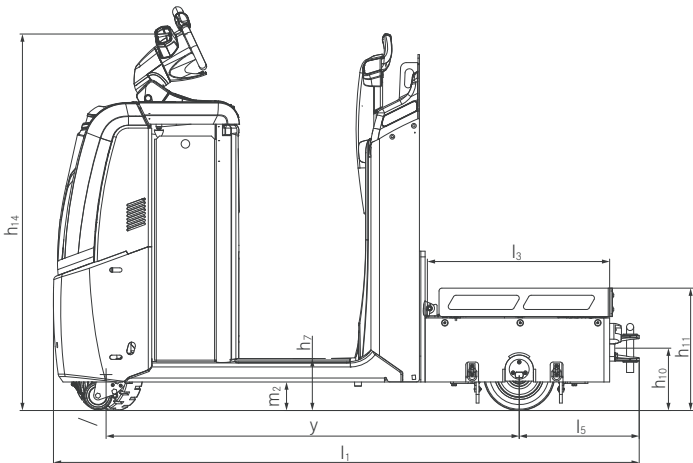
Top view LTX-T 04



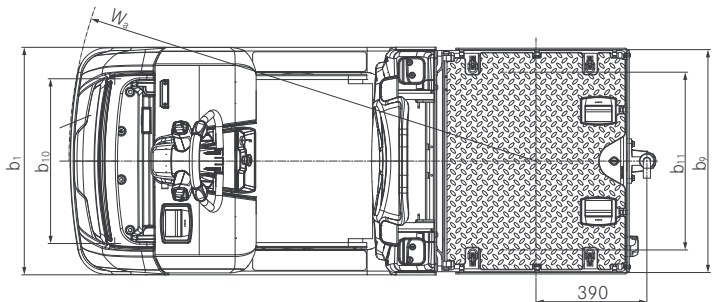
Side view LTX 50



Top view LTX 50

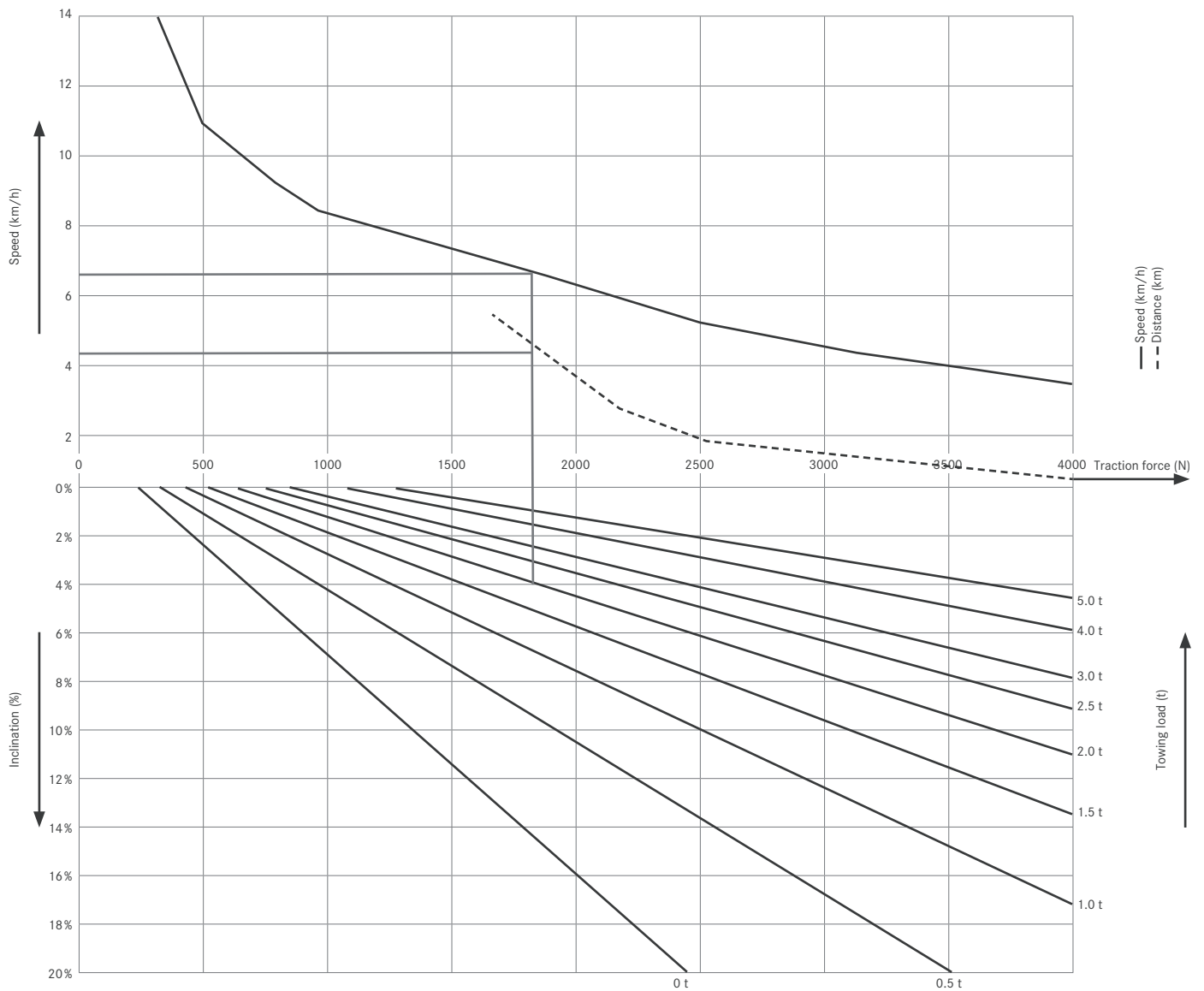


Side view LTX-T 06



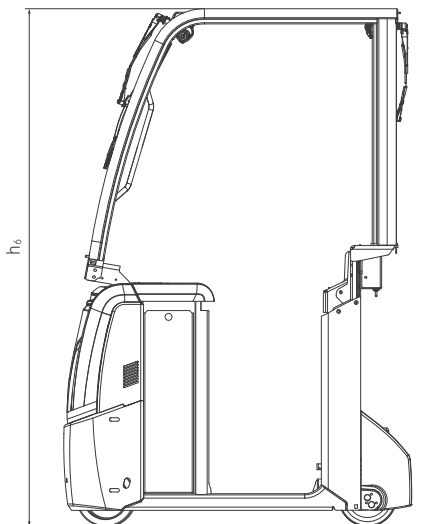
Top view LTX-T 06

LTX Electric Tractor and Transporter
Performance diagram LTX 50



This example shows:
 - towing load of 2,000 kg
 - gradient of 4%
 - maximum speed of 6.6 km/h
 - gradient length 4.4 km

Important: Only braked trailers should be used with a trailer weight of more than 2.5 t and for any use of trailers on gradients.



Side view LTX 50 and LTX-T 06 with optional cabin

LTX Electric Tractor and Transporter
Detailed Photos LTX 20



Vehicle lights for more safety



Fast release of coupling from driver's seat



Fold-out seat for long driving distances



Driver cabin features intuitive controls



Pedestrian mode for efficient order picking



Height-adjustable steering for different drivers

LTX Electric Tractor and Transporter
Detailed Photos LTX 50



Optional LED daytime running lights for best visibility and improved safety at work



Flexible applications thanks to various connection options for tugger train elements and trailers



Optional folding seat for more comfort over longer trips



Unique STILL Easy Drive steering wheel for optimised driver control and operation of all functions without changing grip



Optional accessory bar for versatile application options and many equipment options including flash lights and working lights



Excellent vehicle visibility thanks to optional Safety Light and Safety Light 4Plus for maximum driver safety

LTX Electric Tractor and Transporter
Detailed Photos LTX-T 06



Flexible use: Transport vehicle with trailer coupling



Storage surface with lashing eyelets for up to 600 kg



Storage compartment in the transport platform



LTX in tugging train operation

LTX Electric Tractor and Transporter

Intelligence at work

Ease of work: low entry and large foot space

Suitable for compact working areas: very agile and compact (600 mm vehicle width)

Multi-functional: available as tractor or transporter



LTX 20/LTX-T 04

Intelligence at work - and good looking as well. The LTX 20 compact tractor by STILL stands out not only due to its high functionality but in particular through its carefully conceived design. And design means much more than superficial optics: For example, the ergonomic back rest with folding seat makes work both relaxing and back-friendly. Apropos work - this is something this lean tractor can do better than any other: Highly compact and agile, it pulls heavy loads of up to 2 tons with a convincing acceleration performance. The precise steering allows drivers to handle loads safely at all times.

With a width of only 600 mm, the LTX 20 can be quickly and safely manoeuvred even in the narrowest of aisles. It is therefore ideal for trolley train solutions in lean production or for baggage handling at airports, but also many further areas of application. For instance, the LTX 20 is ideal for moving laundry in hospitals or transporting materials for repair and maintenance work of all kinds - because the transport version LTX-T 04 can move up to 400 kg directly on the vehicle's rear.

High handling capacity thanks to maximised towing load of up to 5,000 kg and speeds of up to 14 km/h

Best ergonomics thanks to optional pneumatically-damped driver's station and adjustable STILL Easy Drive steering wheel

Suitable for narrow aisles thanks to compact dimensions



LTX 50/LTX-T 06

Reliable on time delivery sequences are one of the LTX 50's specialities. Deployed as a trolley train, the future-proof electric tractor can tow trailers with overall weights of up to 5,000 kg down narrow aisles with absolute precision at your production facilities. Thanks to the top speed of up to 14 km/h even long trips can be covered in the shortest possible time. This makes for an efficient and lean production, reduces internal traffic volumes and saves money. Drivers are happy to use the unique STILL Easy Drive steering wheel with an integrated display.

The controls are arranged in an intelligent fashion so that they can be comfortably operated with either hand without changing grip. In addition, the precise and smooth electrical steering with automatic centring keeps the vehicle always on track. Work comfort may be enhanced with the optional pneumatically-damped driver stand platform with foldable seat and height-adjustable back rest. High battery capacities make the LTX 50 a real long-distance runner - the optional Li-Ion technology even allows you to benefit from round the clock availability. As transport version, the LTX-T 06 tows 5,000 kg; with an additional load of up to 600 kg it tows 2,000 kg in combined application.

LTX Electric Tractor and Transporter Extensive Equipment

Power

- Powerful, reliable, low maintenance: modern three-phase drive motors
- Strong handling performance: high towing loads of 2,000 to 5,000 kg
- Fast goods transport: speeds of up to 14 km/h with the LTX 50 and up to 8 km/h with the LTX 20
- Always available: optional lateral battery changes and the Li-Ion battery option for the LTX 50 allows fast charging and simple intermediate charging
- High performance: pedestrian mode saves mounting and dismounting
- With the LTX-T 06 up to 600 kg additional load possible

Precision

- Intuitive control of all functions without changing grip: innovative STILL Easy Drive steering wheel on the LTX 50
- Precision coupling: fast and safe thanks to full visibility of the trailer coupling
- Shock-free and safe goods transport: precision acceleration and steering behaviour plus optional pedestrian mode
- The ideal driving programme for any application

Ergonomics

- Standing comfortably: modern, sprung and damped driver stand platform; for the LTX 50 even an optional adjustable pneumatically-damped stand platform
- More comfort over long trips: folding seat for more travel comfort
- Fatigue-free working: low vehicle entry simplifies mounting and dismounting
- Generous driver cabin with storage space
- Easily loadable transporter: cargo area height from 271 mm on the LTX-T 04

Compactness

- Narrow design: extremely compact and agile for working in tight spaces
- Down the narrowest aisles: very small turning radius enables application in narrow aisles

Safety

- High safety and accident prevention: high visibility of the vehicle thanks to optional LED daytime running lights, Safety Light and Safety Light 4Plus
- Versatile and flexible access control with FleetManager 4.x
- High safety on curvy routes: steering angle dependent Curve Speed Control
- Prevention of impact damage: versatile collision protection options

Environmental Responsibility

- A glowing example: long service life and energy-saving LED lamps
- Sustainable: over 95 per cent of all materials used are recyclable
- Low energy costs at the touch of a button: efficiency mode Blue-Q on the LTX 50
- Minimised noise emissions due to very quiet driving motor

LTX Electric Tractor and Transporter Equipment Variants



		LTX 20	LTX-T 04	LTX 50	LTX-T 06
Driver cabin	Shelf in driver cabin, load side	●	●	○	○
	Driver's station with narrow back rest	—	—	○	○
	Knee pads	●	●	○	○
	Height-adjustable steering wheel	●	●	○	○
	Damped stand platform	●	●	●	●
	Pneumatic damped stand platform	—	—	○	○
	Pneumatically damped stand platform with coupled folding seat	—	—	○	○
Folding seat	○	○	○	○	
Additional accessories	Accessory bracket drive side – low	○	○	○	○
	Accessory bracket drive side – high with cross piece	—	—	○	○
	Accessory bracket load side – low	—	—	○	○
	Accessory bracket load side – high with cross piece	—	—	○	○
	Adjustable DIN A4 writing pad	—	—	○	○
	12 V car power socket	—	—	○	○
	Pedestrian mode via butterfly switch on steering wheel/lateral push buttons	—	—	○	○
	Pedestrian mode via push buttons on side of back rest	○	○	○	○
Battery system	Battery compartment for 200 Ah, craneable	●	●	—	—
	Battery compartment for 200 Ah, lateral change	○	○	—	—
	Battery compartment for 345-465 Ah, craneable	—	—	●	●
	Battery compartment for 345-465 Ah, lateral change	—	—	○	○
	Battery compartment for 560-620 Ah, craneable	—	—	○	○
	Battery compartment for 560-620 Ah, lateral change	—	—	○	○
	Battery compartment Li-Ion battery 205-410 Ah	—	—	○	○
	Adapter tray for alternative batteries	—	—	○	○
	On-board charger	○	○	○	○
Frame	Ground clearance 40 mm	●	○	—	—
	Ground clearance 70 mm	—	—	●	—
	Ground clearance 80 mm	○	●	—	—
	Ground clearance 100 mm	—	—	○	●
	Rubber protection, bottom	—	—	○	○
	Steel guard, low	—	—	○	○
	Steel guard, high	—	—	○	○
	Steel guard and rubber protection, low	—	—	○	○
	FleetManager: shock detection, reports	—	—	○	○
Additional systems	Refrigeration model for up to -30 °C in alternation	—	—	○	○
	Foil roller holder, drive/load side	—	—	○	○
	MMS prepared	—	—	○	○
	Data transmission, Bluetooth	—	—	○	○
	Data transmission, GPRS	—	—	○	○
Safety	Rear view mirror	○	○	○	○
	Warning signal when reversing	○	○	○	○
	Flashlight	○	○	○	○
	Safety Light/Safety Light 4Plus front	—	—	○	○
	LED daytime running lights	○	○	○	○
	Key Access	●	●	●	●
	PIN code access	—	—	○	○
	FleetManager access	—	—	○	○
Tyres	Super elastic tyres, load side	●	●	●	●
	Super elastic tyres, non marking, load side	○	○	—	—
	Solid rubber tyres, load side	○	○	—	—
	Solid rubber tyres, non marking, load side	○	○	○	○
	Polyurethane tyres, load side	—	—	○	○
	Solid rubber drive wheel	●	●	●	●
	Solid rubber drive wheel, treaded	—	—	○	○
	Solid rubber drive wheel, non marking	○	○	—	—
	Polyurethane drive wheel	○	○	○	○
	Polyurethane drive wheel, treaded	—	—	○	○
	Super elastic drive wheel	—	—	—	—
Drive	Maintenance-free three-phase drive motor	●	●	●	●
	Fully encapsulated dirt and dust proof components	●	●	●	●
Tow coupling and system equipment LiftRunner	Single-stage tow bar	●	●	○	○
	Tow bar with 3 stages	○	○	●	—
	Rockinger coupling	—	—	○	○
	Hydraulic function for STILL tigger train elements – control using contact switches	—	—	○	—
	Hydraulic function for STILL tigger train elements – operation by switch	—	—	○	—

● Standard ○ Optional — Not available



STILL GmbH
Berzeliusstraße 10
D-22113 Hamburg
Tel.: +49 (0)40/73 39-20 00
Fax: +49 (0)40/73 39-20 01
info@still.de

For further information please visit:
www.still.eu

STILL is certified in the following areas: Quality management, occupational safety, environmental protection and energy management.



first in intralogistics